

RAD51-390

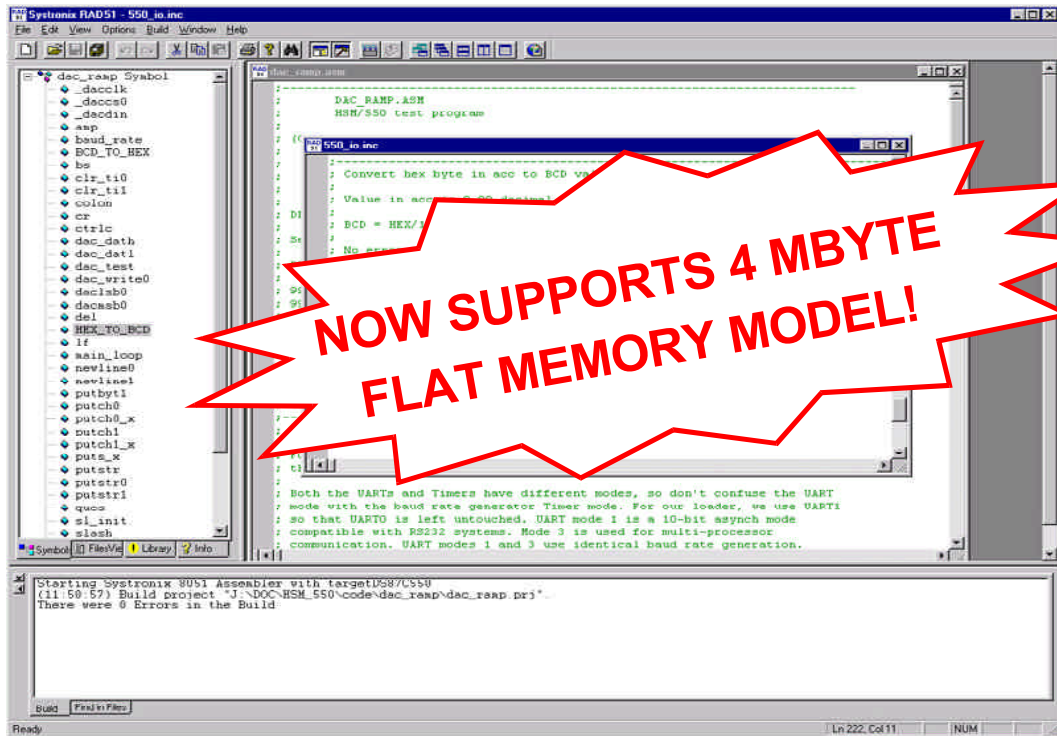
SYSTRONIX®

Rapid 8051 Assembly Code Development

New version - extended DS80C390 support!

The new Rad51 IDE and 8051 assembler helps you develop 8051 assembly code more quickly.

Notice the symbol view in the left pane. The highlighted symbol was clicked which moved the source editor highlight to the symbol's definition in one of the project include files.



Extended-address
8051 assembly code
development.

Editor, symbol table,
code management.

~~Only \$390.~~

ESC special \$290

(when ordered with μ CAN2
through Oct 31, 1999)

RAD51 is the first 8051 assembler to support the flat-memory model of the new large-address-space 8051s such as the dual-CAN DS80C390.

RAD51-390 supports the 4 MByte address space of the new Dallas 80C390, in a flat memory model. These new features include a 24-bit program counter and extended move, jump and call instructions.

RAD51 is a true 32-bit Windows 95/98/NT application.

- Programmer's text editor with standard features such as search and replace, syntax highlighting, etc.
- Extensible controller definition file - modify it yourself or download the latest at www.systronix.com
- Symbol table view lists all project symbols. Double clicking takes you to the symbol definition in any project file.
- File tree view lists all project files.
- Clicking on errors in the output window takes you to the offending source line.
- Latest info and secure on-line ordering at www.systronix.com. Download the free standard version (fully functional, with a 16-bit program counter for all 8051s).

Systronix® Inc.

555 South 300 East #21, Salt Lake City, Utah, USA 84111
Tel:(801)-534-1017 Fax:(801)-534-1019 www.systronix.com