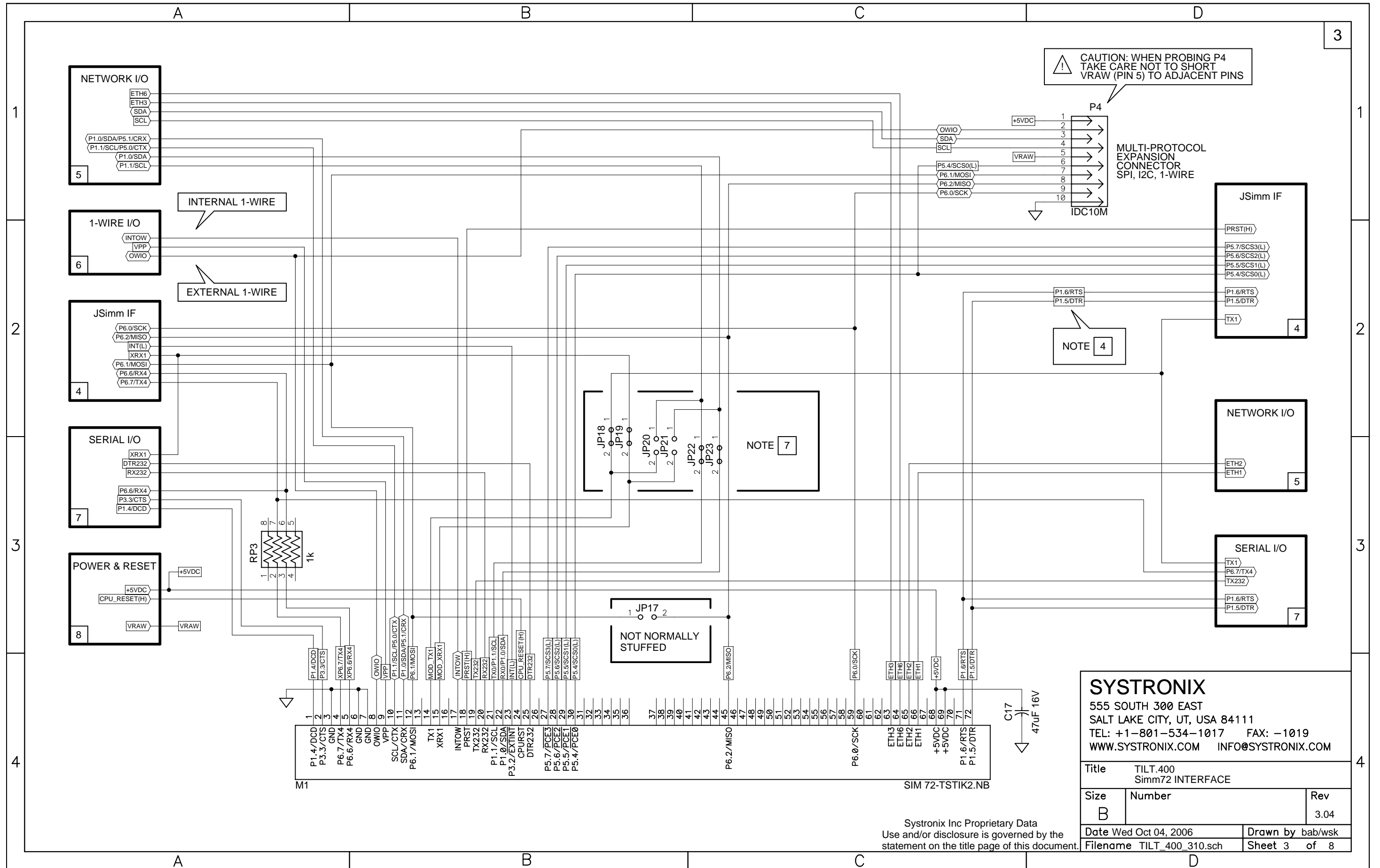


A					B					C					D																																
TILT.400 – REVISIONS															1																																
SCH REV					PCB REV					DATE					BY					DESCRIPTION																											
0.0										02 DEC 31					wsk					START																											
0.01										03 JAN 23					wsk					Sheet 2: Added notes and Jumper table; Sheet 3: Modified M1 pin assignments (3-5); Added JP17,RP3;					Sheet 3: Added note at P4; Sheet 5: Added JP2, RP2; Sheet 6: Labeled P5 NNS;																						
1.00					1.00					03 JAN 27					wsk					Sheet 7: Changed Reference Designators P4 & P6 to J/P1A & J/P1B;																											
2.00					2.00					03 MAY 12					wsk					Sheet 3: Added P4; Sheet 5: Changed C19 to B size package; Changed U5 to SO8 package; Added P4; Sheet 7: Swapped J/P1A & J/P1B; Sheet 8: Changed C14 to 0603 package;																											
2.10					2.10					03 JUL 16					wsk					PCB: Corrected wiring error at serial 0 / serial 4;																											
2.11					2.10					03 SEP 26					wsk					Sheet 6: Replaced missing intersheet connector;																											
2.12					2.10					03 OCT 14					wsk					Sheet 2: Corrected Note 5;																											
2.12					2.11					03 NOV 18					wsk					PCB: Added rubber foot mounting locators to bottom silkscreen;																											
2.13					2.11					03 DEC 10					wsk					Sheet 5: Changed C19 to 16V;																											
2.14					2.11					04 JUL 26					wsk					Sheet 2: Added Note 6; Sheet 3: Added Embedlet Connector annotation; Sheet 4: Corrected JSimm / SimmStick Connector definition; Added note; Sheet 5: Corrected U7 component type; Sheet 6: Renamed this sheet; Marked C20, C21, & U15 as NOT NORMALLY STUFFED; Corrected intersheet reference; Added Device Code table;																											
3.00					3.00					05 JAN 26					wsk					Sheet 2: Modified Notes and the Jumpers Table; Sheet 3: Connected TX1, XRX1, SDA, SCL to the M1; Added JP18-JP23 Sheet 4: Deleted C15, JP1, R2, RP1, RP2, U1, U2, U3 & U4; Added U1; Sheet 5: Deleted JP2, R3, U6, U8; Sheet 6: Deleted JP9, JP14, U13 & U16; Sheet 7: Added C22-C25, JP1, R2, U2; Sheet 8: Deleted P11;																											
3.01					3.00					05 JUN 16					wsk					Sheet 7: Corrected Serial 1 Note; PCB: Corrected JP1 & JP6 labels;																											
3.02					3.00					05 SEP 23					wsk					Sheet 2: Added JP2 & JP9 to Jumpers Table;																											
3.03					3.00					05 DEC 23					wsk					Sheet 6: Added Note at P5;																											
3															<p>Systronix Inc Proprietary Information. This document contains financial, business, scientific, technical, economic or engineering information subject to USC § 1831-1839, Protection of Trade Secrets. Disclosure to others, use, or copying, without the express written authorization of Systronix Inc is strictly prohibited. Violation may result in criminal prosecution under 18 USC § 1831-1839 or 18 USC 1905. Copyright 1999, Systronix Inc. Unpublished Work. All rights reserved.</p> <p>SYSTRONIX 555 SOUTH 300 EAST SALT LAKE CITY, UT, USA 84111 TEL: +1-801-534-1017 FAX: -1019 WWW.SYSTRONIX.COM INFO@SYSTRONIX.COM</p> <table border="1"> <tr> <td colspan="2">Title</td> <td colspan="2">TILT.400 REVISIONS</td> </tr> <tr> <td>Size</td> <td>Number</td> <td colspan="2">Rev</td> </tr> <tr> <td>B</td> <td></td> <td colspan="2">3.04</td> </tr> <tr> <td colspan="2">Date</td> <td colspan="2">Wed Oct 04, 2006</td> </tr> <tr> <td colspan="2">Filename</td> <td colspan="2">TILT_400_310.sch</td> </tr> <tr> <td colspan="2">Drawn by</td> <td colspan="2">wsk</td> </tr> <tr> <td colspan="2">Sheet</td> <td colspan="2">1 of 8</td> </tr> </table>					Title		TILT.400 REVISIONS		Size	Number	Rev		B		3.04		Date		Wed Oct 04, 2006		Filename		TILT_400_310.sch		Drawn by		wsk		Sheet		1 of 8	
Title		TILT.400 REVISIONS																																													
Size	Number	Rev																																													
B		3.04																																													
Date		Wed Oct 04, 2006																																													
Filename		TILT_400_310.sch																																													
Drawn by		wsk																																													
Sheet		1 of 8																																													
4																				<p>TO DO:</p> <p>SPI, i2C, 1-wire, Vraw, +5, GND possibly a net board JSimm.proto.net i2c xcver package change</p>																											
4																																															
4																																															
4																																															
4																																															
4																																															
4																																															
4																																															
4																																															
4																																															
TABLE OF CONTENTS																																															
SHEET					TITLE																																										
1					REVISIONS																																										
2					NOTES																																										
3					Simm72 INTERFACE																																										
4					JSimm INTERFACE																																										
5					NETWORK I/O																																										
6					1-WIRE I/O																																										
7					SERIAL I/O																																										
8					POWER & RESET																																										
A					B					C					D																																



CAUTION: WHEN PROBING P4
TAKE CARE NOT TO SHORT
VRAW (PIN 5) TO ADJACENT PINS

NOTE 4

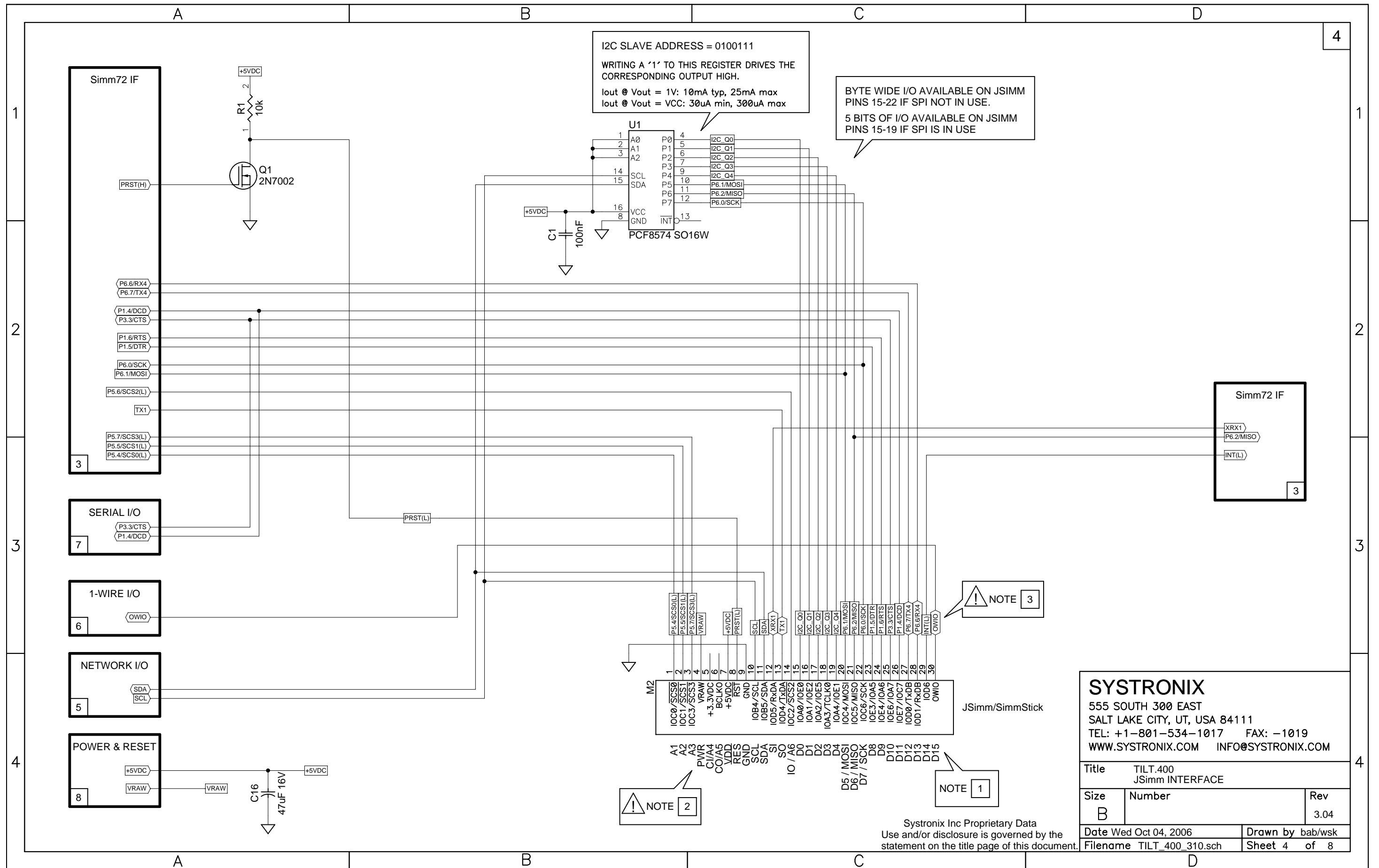
NOTE 7

NOT NORMALLY
STUFFED

SYSTRONIX
555 SOUTH 300 EAST
SALT LAKE CITY, UT, USA 84111
TEL: +1-801-534-1017 FAX: -1019
WWW.SYSTRONIX.COM INFO@SYSTRONIX.COM

Title TILT.400 Simm72 INTERFACE		
Size B	Number	Rev 3.04
Date Wed Oct 04, 2006	Drawn by bab/wsk	
Filename TILT_400_310.sch	Sheet 3 of 8	

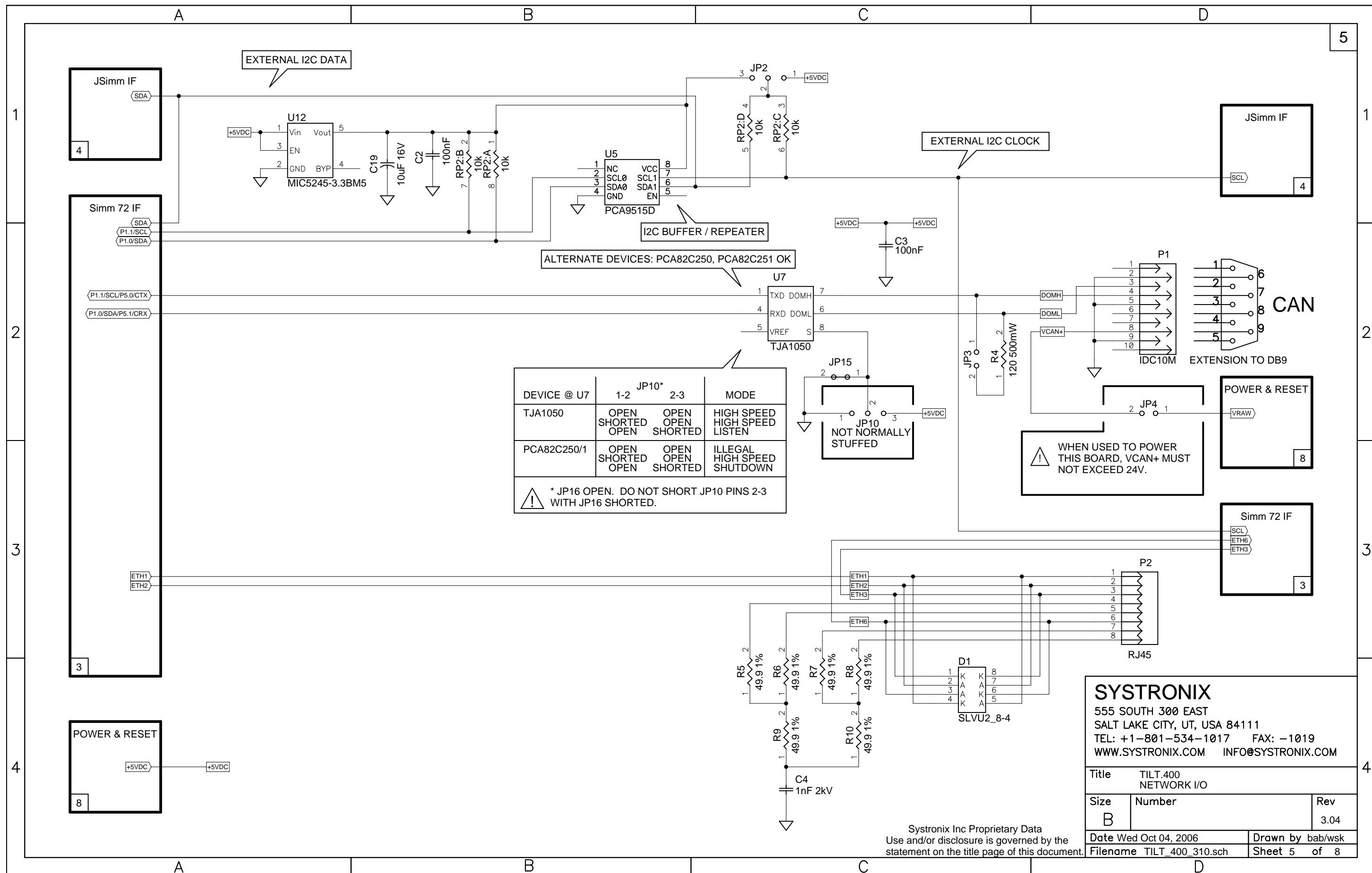
Systronix Inc Proprietary Data
Use and/or disclosure is governed by the
statement on the title page of this document.



SYSTRONIX
 555 SOUTH 300 EAST
 SALT LAKE CITY, UT, USA 84111
 TEL: +1-801-534-1017 FAX: -1019
 WWW.SYSTRONIX.COM INFO@SYSTRONIX.COM

Title		TILT.400 JSimm INTERFACE
Size	Number	Rev
B		3.04
Date	Wed Oct 04, 2006	Drawn by bab/wsk
Filename	TILT_400_310.sch	Sheet 4 of 8

Systronix Inc Proprietary Data
 Use and/or disclosure is governed by the
 statement on the title page of this document.



DEVICE @ U7	JP10*		MODE
	1-2	2-3	
TJA1050	OPEN SHORTED OPEN	OPEN OPEN SHORTED	HIGH SPEED HIGH SPEED LISTEN
PCA82C250/1	OPEN SHORTED OPEN	OPEN OPEN SHORTED	ILLEGAL HIGH SPEED SHUTDOWN

* JP16 OPEN. DO NOT SHORT JP10 PINS 2-3 WITH JP16 SHORTED.

SYSTRONIX
 555 SOUTH 300 EAST
 SALT LAKE CITY, UT, USA 84111
 TEL: +1-801-534-1017 FAX: -1019
 WWW.SYSTRONIX.COM INFO@SYSTRONIX.COM

Title TILT.400 NETWORK I/O		
Size B	Number	Rev 3.04
Date Wed Oct 04, 2006	Drawn by bab/wsk	
Filename TILT_400_310.sch	Sheet 5 of 8	

Systronix Inc Proprietary Data
 Use and/or disclosure is governed by the statement on the title page of this document.

