

SYSTRONIX TINI INITIAL LEARNING TOOL (TILT) – REVISIONS

1

SCH REV	PCB REV	DATE	BY	DESCRIPTION	SCH REV	DATE	BY
0.0		00 Feb 18	wsk	Schematic capture.			
1.0	1	00 Feb 18	wsk	Schematic capture & layout complete.			
2.0	2	00 Feb 22	wsk	Renumbered components; added copper pours under heat sink; added descriptive text;			
3.0	3	2k Mar 01	wsk	Sheet 3: Added U3; changed R3 to 470 ohms; added Dallas trademark text and symbol; tweaked the silkscreen; Deleted C2, P2, R1; Replaced P1 with 2x5 header;			

3

3

Systronix Inc Proprietary Information.
 This document contains financial, business, scientific, technical, economic or engineering information subject to USC § 1831-1839, Protection of Trade Secrets. Disclosure to others, use, or copying, without the express written authorization of Systronix Inc is strictly prohibited. Violation may result in criminal prosecution under 18 USC § 1831-1839 or 18 USC 1905.
 Copyright 1999, Systronix Inc.
 Unpublished Work. All rights reserved.

TABLE OF CONTENTS

SHEET	TITLE
1	REVISIONS
2	NOTES
3	MODULE INTERFACE

TO DO:

SYSTRONIX
 555 SOUTH 300 EAST
 SALT LAKE CITY, UT, USA 84111
 TEL: +1-801-534-1017 FAX: -1019
 WWW.SYSTRONIX.COM INFO@SYSTRONIX.COM

Title TINI INITIAL LEARNING TOOL (TILT)
 REVISIONS

Size	Number	Rev
B		3

Date Wed Nov 08, 2000 Drawn by wsk
 Filename Tilt_03.sch Sheet 1 of 3

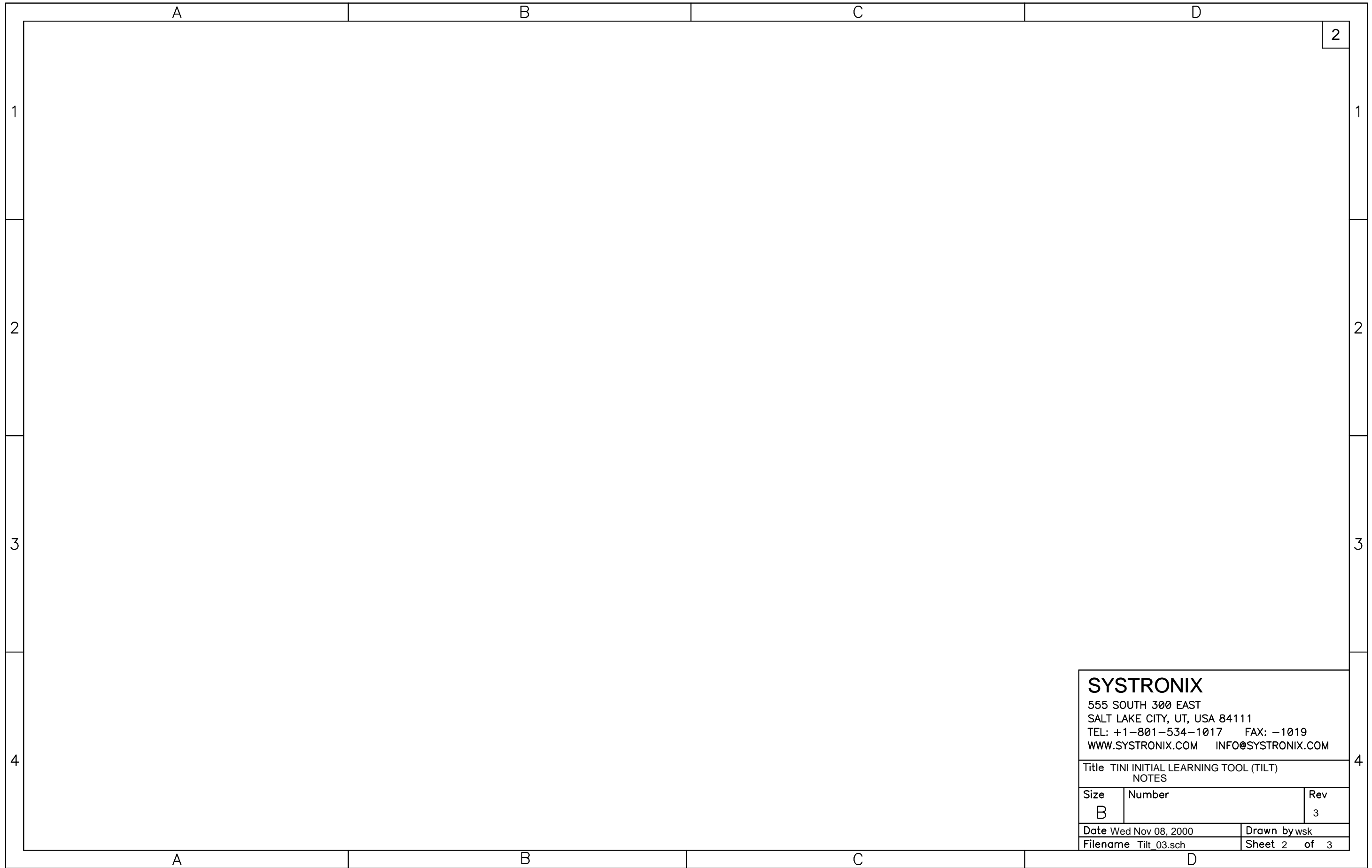
4

A

B

C

D



SYSTRONIX		
555 SOUTH 300 EAST SALT LAKE CITY, UT, USA 84111 TEL: +1-801-534-1017 FAX: -1019 WWW.SYSTRONIX.COM INFO@SYSTRONIX.COM		
Title TINI INITIAL LEARNING TOOL (TILT) NOTES		
Size B	Number	Rev 3
Date Wed Nov 08, 2000	Drawn by wsk	
Filename Tilt 03.sch	Sheet 2 of 3	

